

# PRODUCTION SPECIFICATIONS

## THE LARGE HALL (STORE SAL)

### CONTENT

---

Contact information.....	2
No smoking.....	2
The Large Hall .....	2
Driving instructions.....	3
Load-in .....	3
Dressing rooms.....	4
Stage measures .....	5
Fly bars.....	6
Rigging .....	7
Audio equipment.....	8
Piano .....	9
Light equipment.....	9

**værket**

## Contact information

---

### Værket

Sven Dalsgaards Plads 1  
8900 Randers C  
T: +45 89 13 51 00  
F: +45 89 13 51 13  
info@vaerket.dk

### Technical manager

Arne Degn Nielsen  
T: +45 40 16 45 00  
adn@vaerket.dk

### Managing director

Mikael Qvist Rørsted  
T: +45 40 40 73 35  
mr@vaerket.dk

## No smoking

---

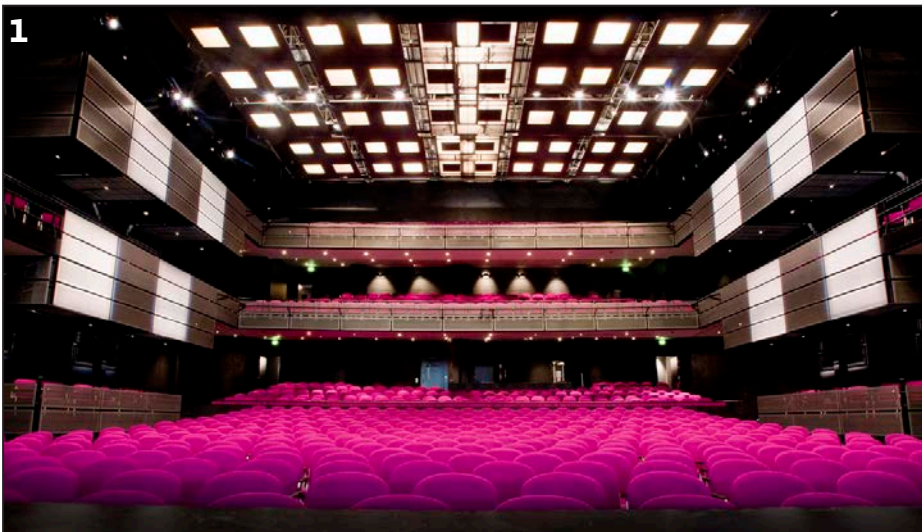
Smoking is not allowed inside Vaerket at any time.



## The Large Hall (Store Sal)

---

The Large Hall (Store Sal) is an old engine/turbine hall, converted into a concert hall, with the old cranes etc. still present in the room, which gives it a nice industrial feel & look.



1) The Large Hall  
Capacity 1.005 (all seated)



2) Modified set-up with Sound Shells for classical concerts.  
Capacity 1.005 (all seated)

3) "Club set-up" with chairs removed on the floor.  
Capacity 1.300 (300 seated and 1.000 standing)

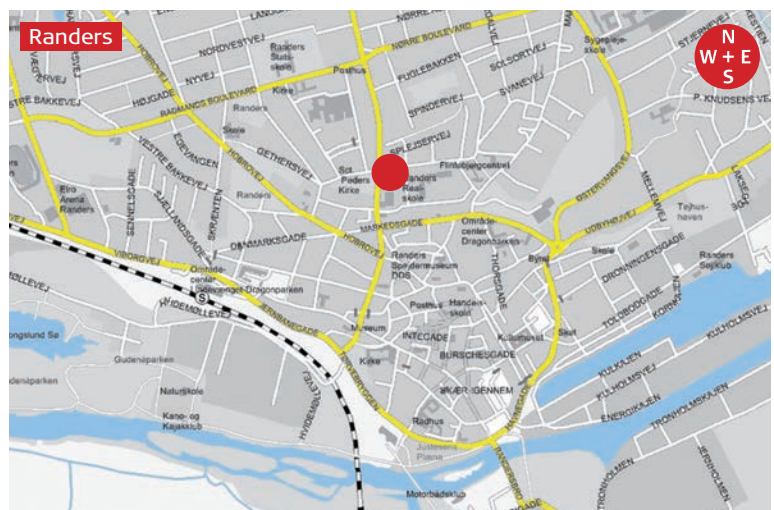
## Driving instructions: Load in

### From the north side of Randers:

Leave **highway E45** at exit number 40  
 Turn to the left at **Viborgvej** (16). Drive for 2,4 kilometres.  
 Continue at **Jernbanegade** for 0,6 kilometres  
 Turn to the left at **Vestervold** (which will become **Mariagervej**)  
 Continue for 75 meters and you reach Værket (on your right)

### From the south side of Randers:

Leave **highway E45** at exit number 42  
 Continue at **Hadstenvej** for 0,6 kilometres  
 Continue at **Århusvej** for 3,2 kilometres  
 Continue at **Randers Bro** 0,3 kilometres  
 Turn to the left at **Tørvebyggen**. Drive for 0,7 kilometres.  
 Turn to the right at **Vestervold** (which will become **Mariagervej**)  
 Continue for 75 meters and you reach Værket (on your right)



## Load in

### Load-in address/stage entrance

Stage ramp (height 1 m) from:  
Mariagervej, 8900 Randers C

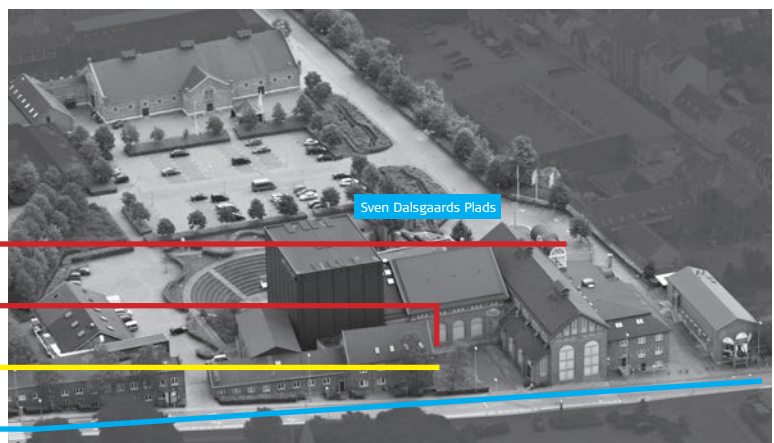
Load in directly on sidestage.

**Administration / Main Entrance**

**Stage Entrance / Load-in**

**Power**

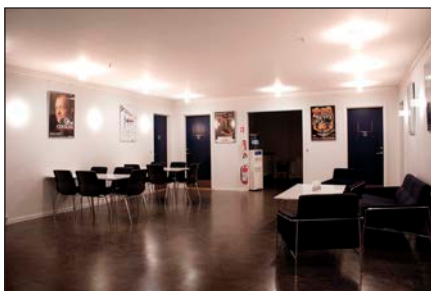
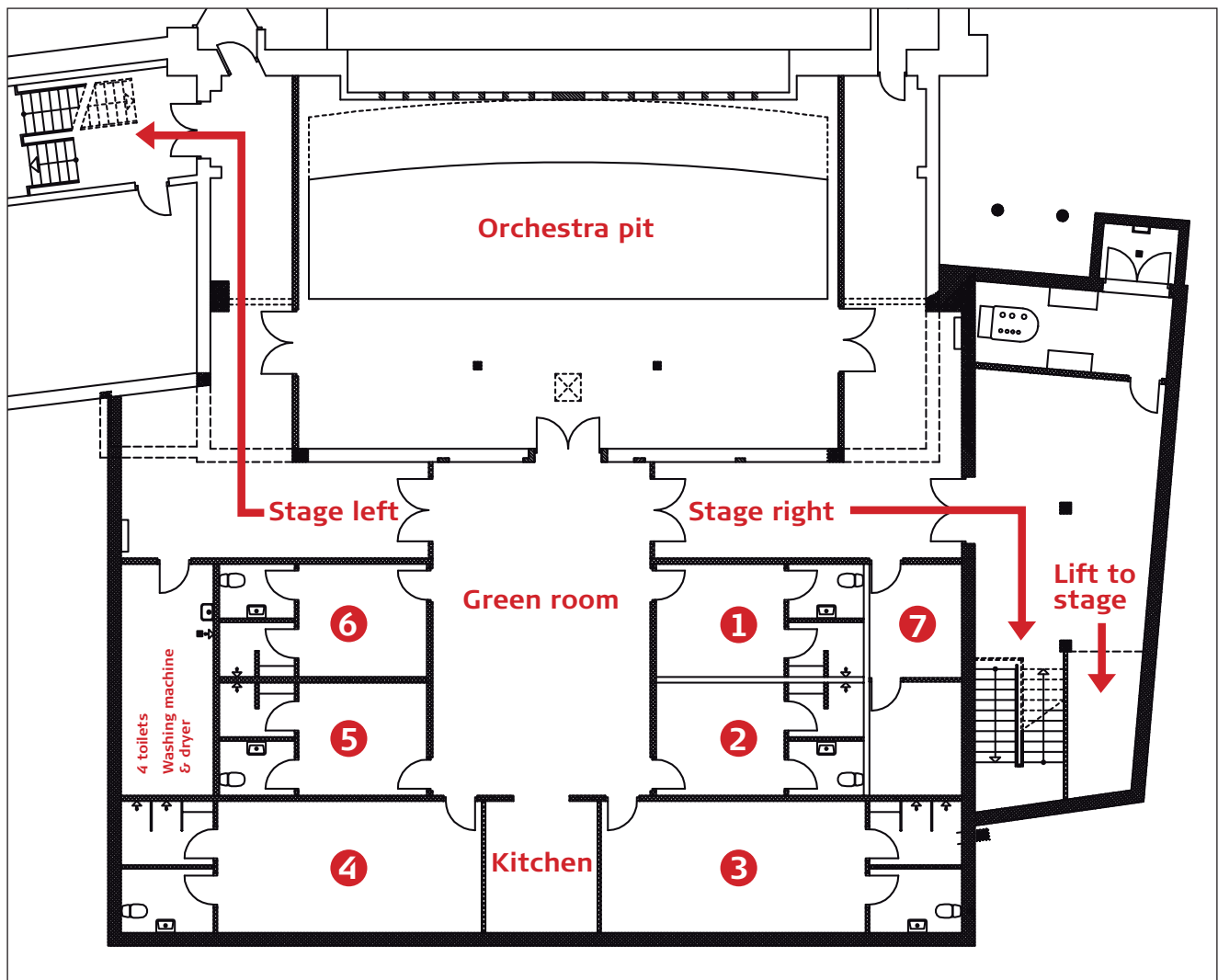
**Mariagervej**



## Dressing rooms

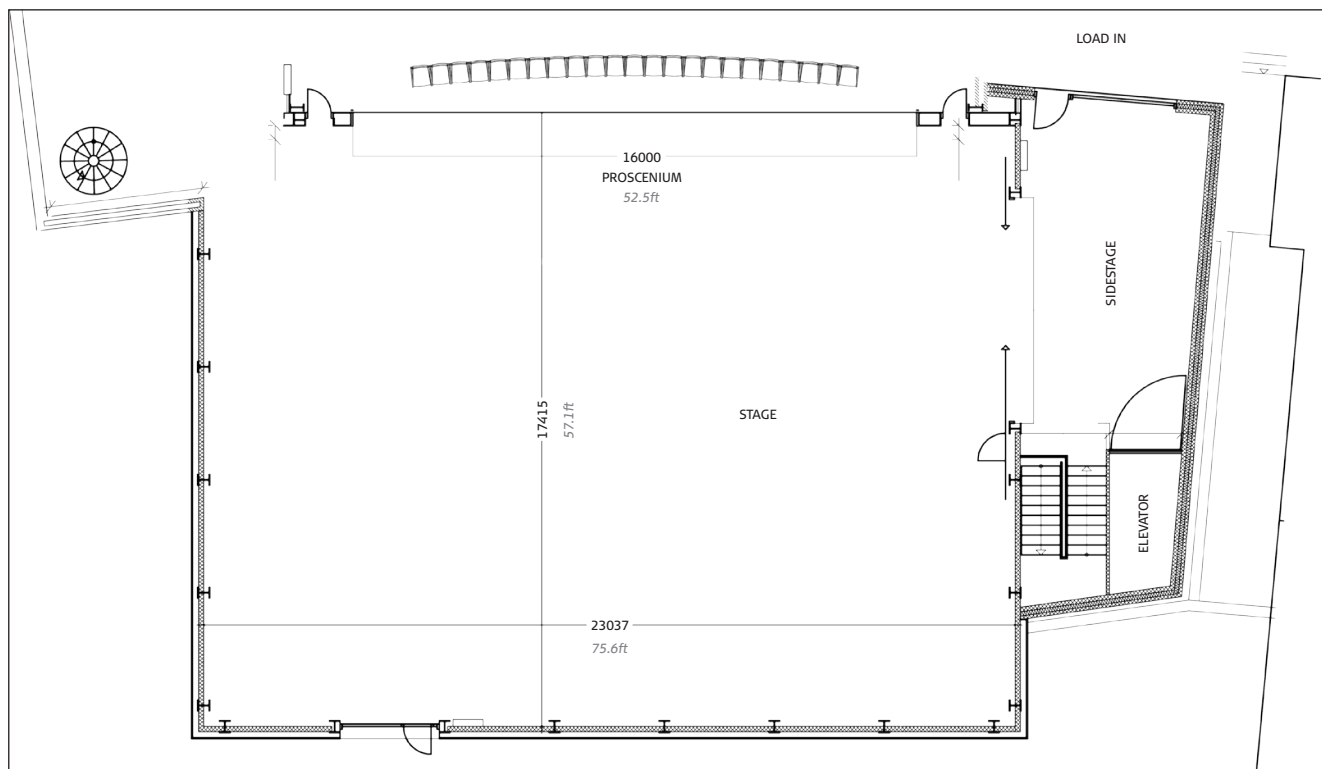
**A total of 36 seats shared like this:**

- 2 large ensemble dressing rooms with tables, mirrors and wardrobe-closets for 10 people in each.  
Marked 3 and 4 on the map below
- 4 soloist dressing rooms with tables, mirrors and wardrobe-closets for 2 people in each.  
Marked 1, 2, 5 and 6 on the map below (These can be modified to 4 people in each.)
- 1 soloist dressing room for 2 people without bathroom/toilet  
Marked 7 on the map below



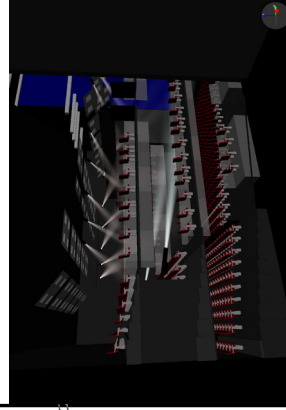
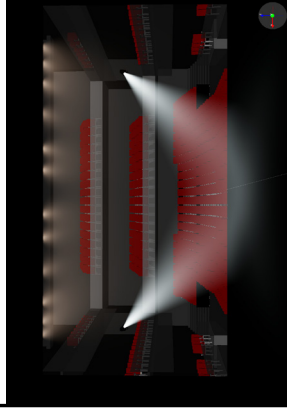
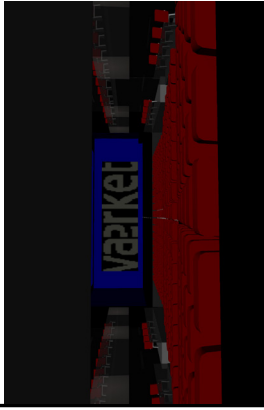
## Stage measures

<p><b>Stage measures</b></p> <p>Stage level 1m 3.3 ft</p> <p>Behind the curtain 17m x 16m (d x w) 55.8 x 52.5 ft</p> <p>Forestage 1m x 16m (d x w) 3.3 x 52.5 ft</p>	<p><b>Hanging bars</b></p> <p>49 motorized bars/light bars</p> <p>1 motorized bar/light bar in the auditorium</p> <p>2,5m 8.2ft from proscenium</p>
<p><b>Orchestra pit</b></p> <p>Small 4,5m x 13,5m (d x w) 14.8ft x 44.3ft</p> <p>Large 8,5m x 13,5m (d x w) 27.9ft x 44.3ft</p> <p>Max. depth 3m 9.8ft</p> <p>Musicians 80-90</p>	<p><b>Black maskings</b></p> <p>2 extra stage curtains 18m x 10m 59ft x 32.8ft</p> <p>12 legs 10m x 3m 32.8ft x 9.8ft</p> <p>6 borders 18m x 3,5m 59ft x 11.5ft</p> <p>Bar nr. 4 1 housecurtain as flycurtain or horizontal</p> <p>Projection 18m x 10m 59ft x 32.8ft</p>
<p><b>Proscenium opening</b></p> <p>Total width 16m 52ft</p> <p>Effective width 0-16m 0-52.5ft</p> <p>Height 7m 23ft</p> <p>Prosceniumsbar nr. 3</p>	<p><b>Power</b></p> <p>(3p+N+Gnd) CEE</p> <p>Up stage left: 1 x 125 Amps + 2 x 63 Amps + 1 x 3 x 32 Amps + 4 x 16 Amps + 250 Amps powerlock</p> <p>Up stage right: 1 x 125 Amps + 3 x 63 Amps + 1 x 3 32 Amps + 4 x 16 Amps</p>
<p><b>Distance between stage and desk for light/sound in auditorium 22,5m 73.8 ft</b></p>	

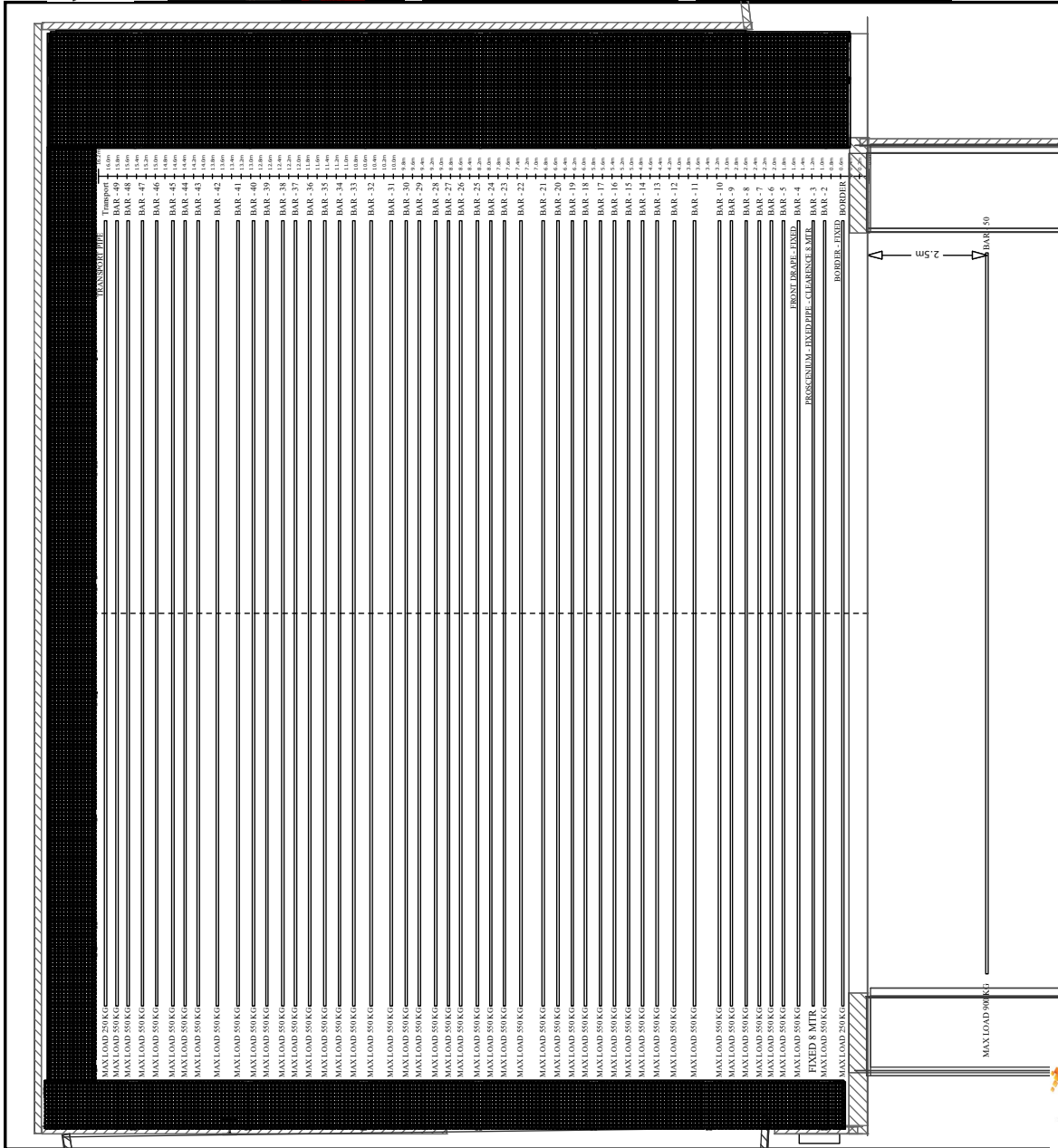


# Fly bars

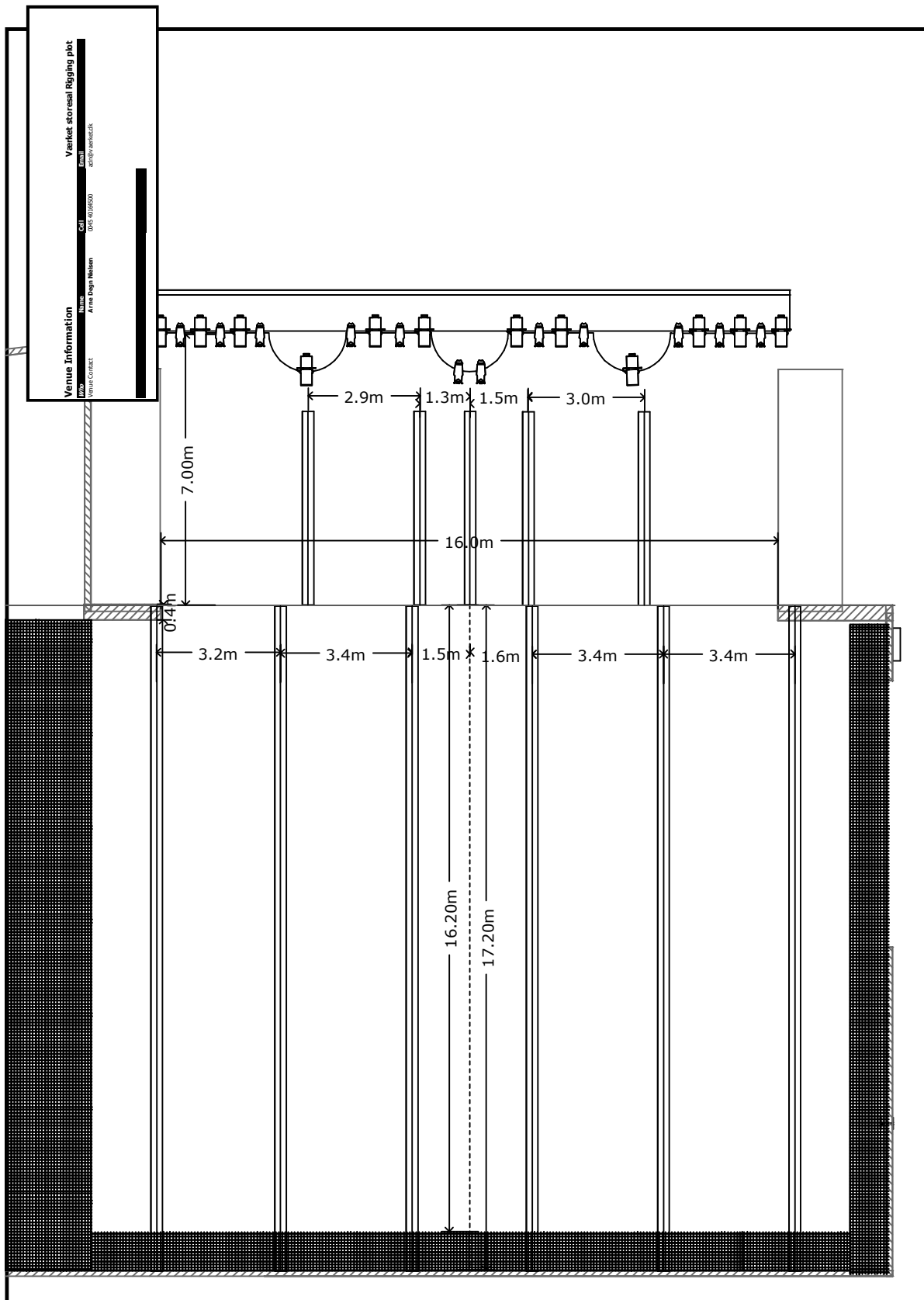
# værket



Værket, Randers	
Store nr 1	Site specific
Where created	Created by
Created	Created on
Created by	Created on
Created by	Created on
Created by	Created on
Created by	Created on



# Rigging



## Audio equipment

---

### FOH Consoles:

- 1 x Yamaha CL5 with 2 x Rio 3224D2 stagebox
- 1 x Yamaha CL1 with 1 x Rio 3224D stagebox
- 1 x Yamaha LS9-32 with 2 x SB168-ES stagebox
- 1 x Yamaha LS9-16

### Main front per side:

- 2 x L-Acoustics SB28, powered by LAB PLM 10000Q & Lake controller
- 3 x L-Acoustics ARCS II 50 Hz, powered by LAB PLM 10000Q & Lake controller

### Delay for balcony, per side:

- 2 x L-Acoustics ARCS 60 Hz powered by LAB PLM 10000Q & Lake controller

### Delay for FOH, per side:

- 2 x L-Acoustics 108P self powered

### Side balcony, per side:

- 1 x L-Acoustics 8XT powered by LAB 2100

### Front fill's placed on stage front, per side:

- 3 x L-Acoustics X8
- 1 x L-Acoustics LA4X Amp/Control

### Front fill's build in across stage front, per side:

- 4 x Genelec 6"/1" powered by LAB 500 & LAB 2100
- 1 x TC Electronic XO24
- System distributed by TC Electronic EQ station

### Monitors:

- 12 x L-Acoustics X12
- 3 x L-Acoustics LA4X Amp/Control

### Mic's and stands:

- Festival setup



## Piano

---

Steinway grand concert piano Model D.

## Light equipment

---

Light FOH is situated next to the sound FOH in an open box, in center, at the back of the Hall 22,5m in front of the stage. The FOH box is level with the stage.

There is a clear line of sight from the FOH to stage area. The Box is included with 4 separate DMX lines running to our DMX split situated in the dimmer room.

On stage there is two wells situated on stage left and right with again 4 separate DMX lines running to our split in the dimmer room.

Hanging: there are electric and weighted bars in the entire depth of the stage. See plot.

Rigging: It is of course possible to rig extra points in our roof, for truss etc. should our bars not suffice. Please contact us should you need to rig extra points in our roof.

### Conventional Lights

Available	Manufacturer	Type	Model	Degrees	KW
15	ADB	Profile	DS 101	19-41	1
17	ADB	Profile	DN 101	9-20	1
4	ADB	Fresnel	F 101	13-59	1
15	ADB	Fresnel	F 202	12-61	2
8	Thomas	Par 64			1
4 x 6	Thomas	Par 64	4 bars with 6 lamps		1
12	ADB	Backdrop			

### 1 Fixed front in house

Available	Manufacturer	Type	Model	Degrees	KW
24	Prolights	Profile	ECLProfil CT+6 colors	15-30	288 W

**Moving Lights**

Available	Manufacturer	Type	Model
12	Claypaky	LED Profile	Axcor 300
12	Prolights	LED Wash	Stark 1000
5	GLP	LED Profile	Spot one

Followspot: 2 x Spotlight Vedette 1200w MSR-HMI 7°-18°

**Haze:**

1 x Swefog ultimate 3000

**Desk:**

1x MA dot2.

Dimmers 4 blocks of Avab 30 channel dimmers. Total of 120 channels.

All conventional lights are equipped with Tuschell sockets.

**We look forward  
to your visit!**