

PRODUCTION SPECIFICATIONS

THE MANÈGE (RIDEHUSET)

PLEASE NOTE:

Clearance 4,70m from stage to truss (see pictures on page 2)

CONTENT

Contact information.....	2
No smoking.....	2
The Manège	2
Driving instructions.....	3
Load-in / Power	3
Stage measures	4
Backstage	5
Audio equipment.....	6
Light equipment.....	6

værket

Contact information

Værket

Sven Dalsgaards Plads 1
8900 Randers C
T: +45 89 13 51 00
F: +45 89 13 51 13
info@vaerket.dk

Technical manager

Arne Degn Nielsen
T: +45 40 16 45 00
adn@vaerket.dk

Managing director

Mikael Qvist Rørsted
T: +45 40 40 73 35
mr@vaerket.dk

No smoking

Smoking is not allowed inside Vaerket at any time.



The Manège (Ridehuset)

Built in 1887 The Manège housed The Danish King Christian X's finest cavalry.
Today The Manège is a part of Vaerket and houses large conferences and concerts.



1) The Manège
Capacity 1.400 standing.



2) Modified set-up with café
tables. Capacity 560
(all seated).



3) "Rock Club set-up"
Capacity 500 standing.

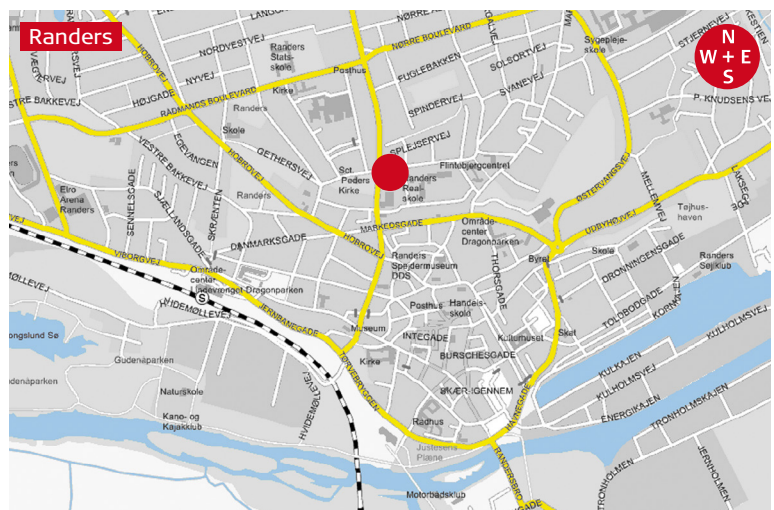
Driving instructions

From the north side of Randers:

Leave **highway E45** at exit number 40
 Turn to the left at **Viborgvej** (16). Drive for 2,4 kilometres.
 Continue at **Jernbanegade** for 0,6 kilometres
 Turn to the left at **Vestervold** (which will become **Mariagervej**)
 Turn to the right at **Fabersvej** and then right at **Ridehusvej** to reach Værket/back stage

From the south side of Randers:

Leave **highway E45** at exit number 42
 Continue at **Hadstenvej** for 0,6 kilometres
 Continue at **Århusvej** for 3,2 kilometres
 Continue at **Randers Bro** 0,3 kilometres
 Turn to the left at **Tørvebyggen**. Drive for 0,7 kilometres.
 Turn to the right at **Vestervold** (which will become **Mariagervej**)
 Turn to the right at **Fabersvej** and then right at **Ridehusvej** to reach Værket/back stage



Load in / Power

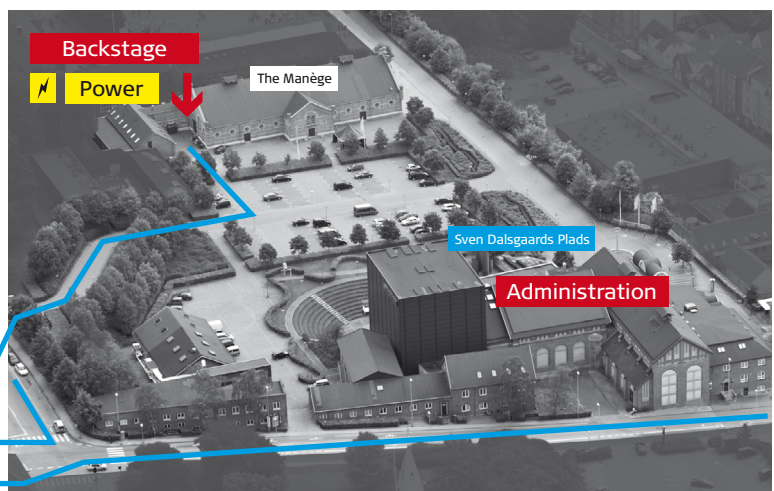
Load in

Access to The Manège (Ridehuset) is via **Fabersvej/Ridehusvej** – as shown on the picture.

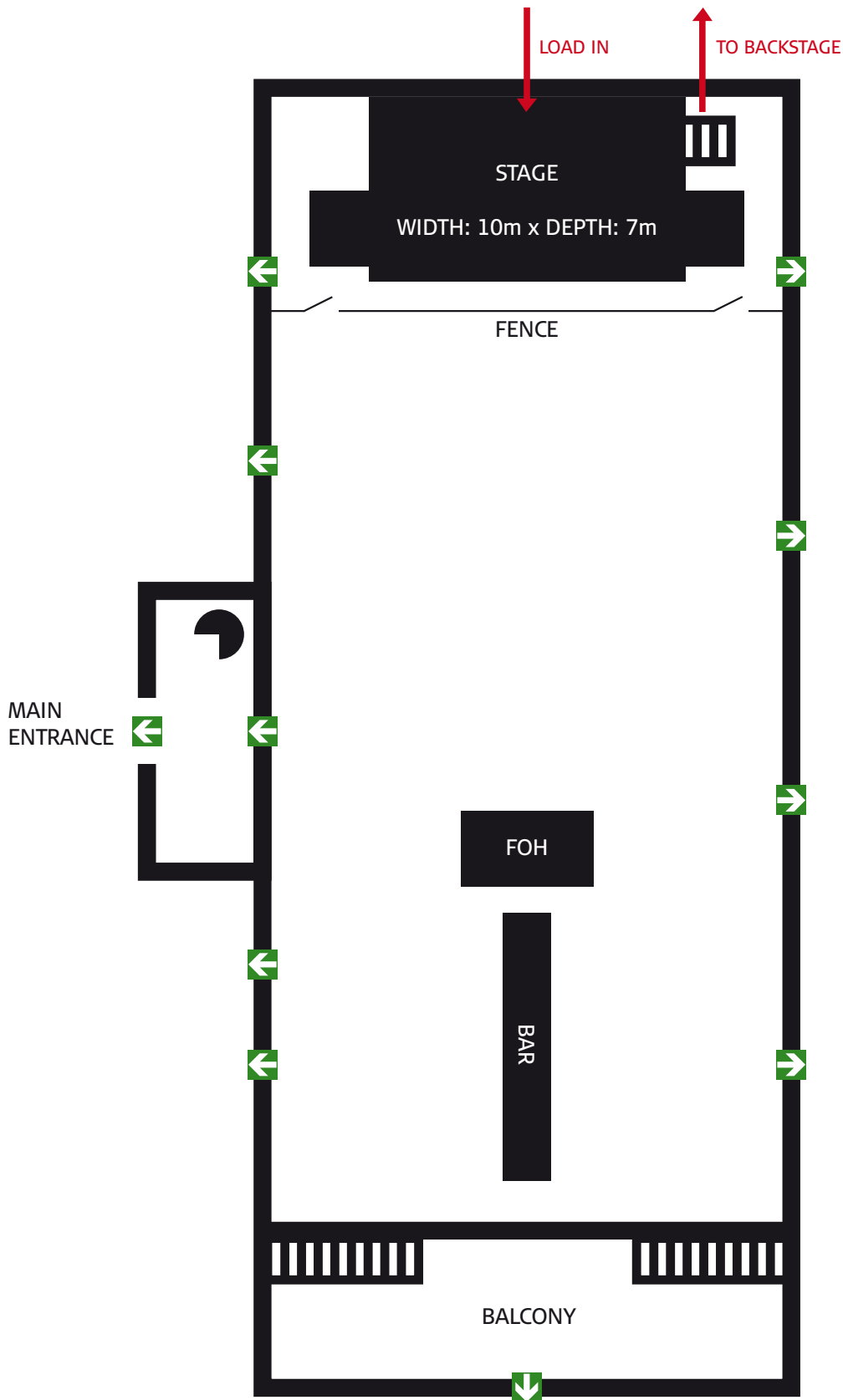
Aux power:

- 1 x 125 amp 5 phase CEE
- 2 x 63 amp 5 Phase CEE
- 3 x 16 amp 5 phase CEE
- 3 x 16 amp 3 phase CEE

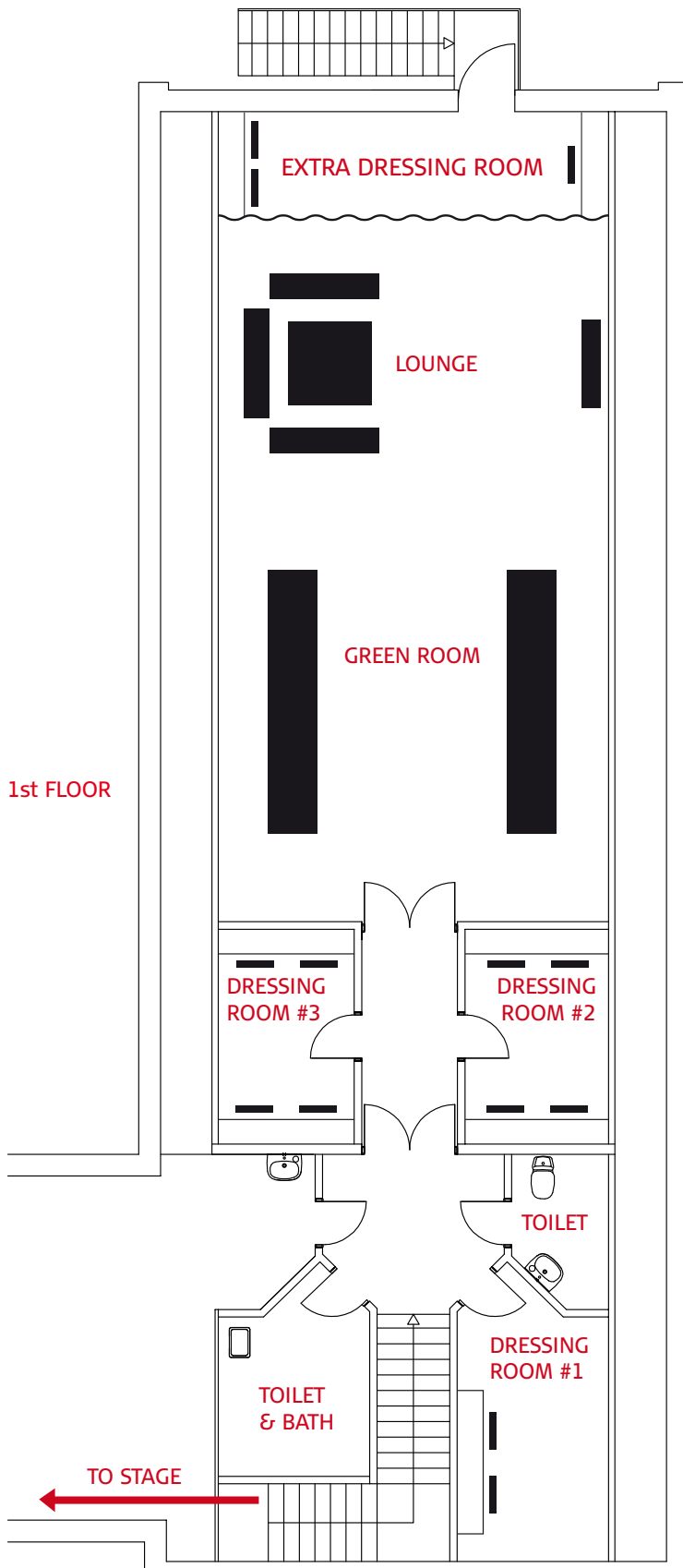
- Ridehusvej
- Fabersvej
- Mariagervej



Stage measures



Backstage



Dressing room #1

2 persons

Dressing rooms #2 & 3

4 persons in each

Extra dressing room

3 persons

Audio equipment

There is no permanent PA installed in The Manège.
If needed, PA will be installed to meet requirements.

Light equipment

Standard setup

The Manège (Ridehuset) is equipped with a Box truss. 10x6 Mtrs. Hanging in 4 electric hoists (500kg)

All lights is hung on front, center and back truss. Please see illustration below. All lights at the Manège are set up to fit the specifications of the various acts.

Dimmers: 6 blocks of 12 Ch Dimmers.

All Multi core is with Harting sockets.

In most setups, there will be hung 4 to 8 ADB 1200 W profiles in front of the box truss.

Throughout the entire length of Ridehuset there is a total of 22 Harting sockets which can be connected to our dimmers.

FOH: The FOH will consist of a fenced in an area 2/3 from stage, shared with sound.

Aux power: In back (north end) there is:

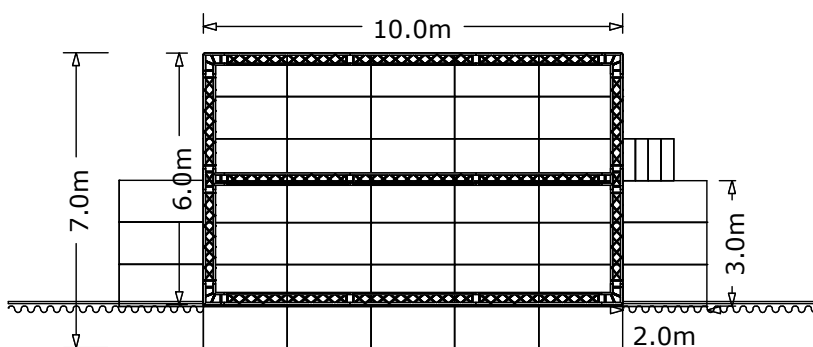
- 1x125 amp 5 phase CEE
- 2x63 amp 5 Phase CEE
- 3x16 amp 5 phase CEE
- 3x16 amp 3 phase CEE

Stage left (east):

As above.

All power will have to be distributed between Light, Sound and Backline.

It is possible to rig extra truss throughout the length of The Manège Please contact us beforehand should the need arise.



**We look forward
to your visit!**