

PRODUCTION SPECIFICATIONS

THE CONCERT HALL (KONCERTSALEN)

CONTENT

| | |
|----------------------------|---|
| Contact information | 2 |
| No smoking | 2 |
| The Concert Hall | 2 |
| Driving instructions | 3 |
| Load-in | 3 |
| Backstage facilities | 4 |
| Stage measures | 5 |
| Piano | 6 |
| Audio equipment | 6 |
| Light equipment | 6 |

værket

Contact information

Værket

Sven Dalsgaards Plads 1
8900 Randers C
T: +45 89 13 51 00
F: +45 89 13 51 13
info@vaerket.dk

Technical manager

Arne Degn Nielsen
T: +45 40 16 45 00
adn@vaerket.dk

Managing director

Mikael Qvist Rørsted
T: +45 40 40 73 35
mr@vaerket.dk

No smoking

Smoking is not allowed inside Vaerket at any time.



The Concert Hall (Koncertsalen)



The Concert Hall (Koncertsalen) is an old engine/turbine hall, rebuilt into a concert hall, with the old cranes etc. still present in the room, which gives it a nice industrial feel & look. The capacity is 444 (all seated).

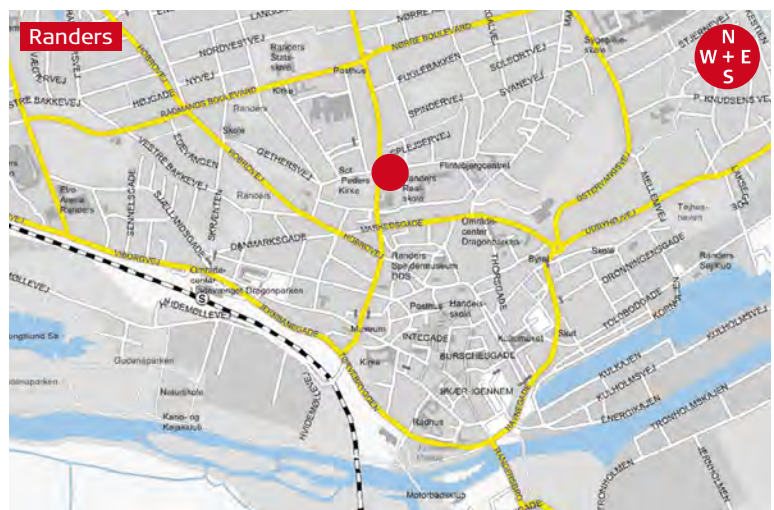
Driving instructions: Load in

From the north side of Randers:

Leave **highway E45** at exit number 40
 Turn to the left at **Viborgvej** (16). Drive for 2,4 kilometres.
 Continue at **Jernbanegade** for 0,6 kilometres
 Turn to the left at **Vestervold** (which will become **Mariagervej**)
 Continue for 75 meters and you reach Værket (on your right)

From the south side of Randers:

Leave **highway E45** at exit number 42
 Continue at **Hadstenvej** for 0,6 kilometres
 Continue at **Århusvej** for 3,2 kilometres
 Continue at **Randers Bro** 0,3 kilometres
 Turn to the left at **Tørvebyggen**. Drive for 0,7 kilometres.
 Turn to the right at **Vestervold** (which will become **Mariagervej**)
 Continue for 75 meters and you reach Værket (on your right)



Load in

Load-in address/stage entrance

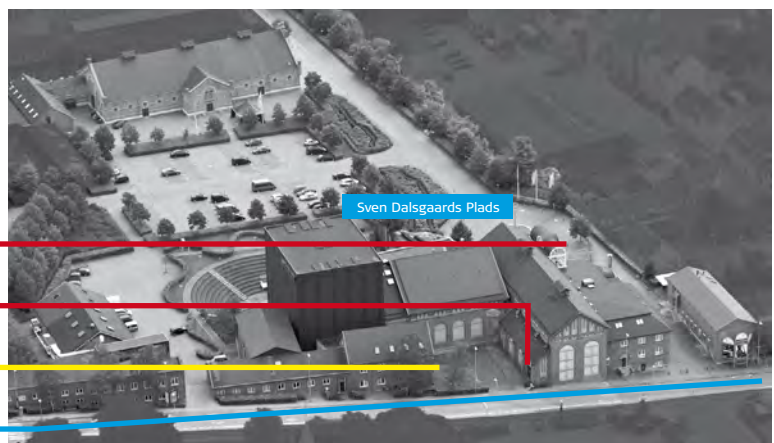
Mariagervej, 8900 Randers C

Administration / Main Entrance

Stage Entrance / Load-in

Power

Mariagervej

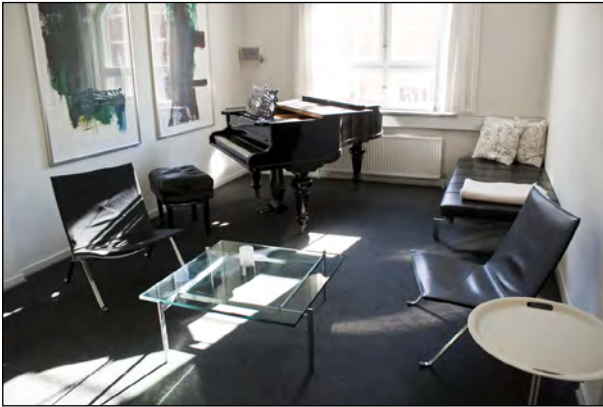


Backstage facilities

The Musicians Foyer



1 artist dressing room

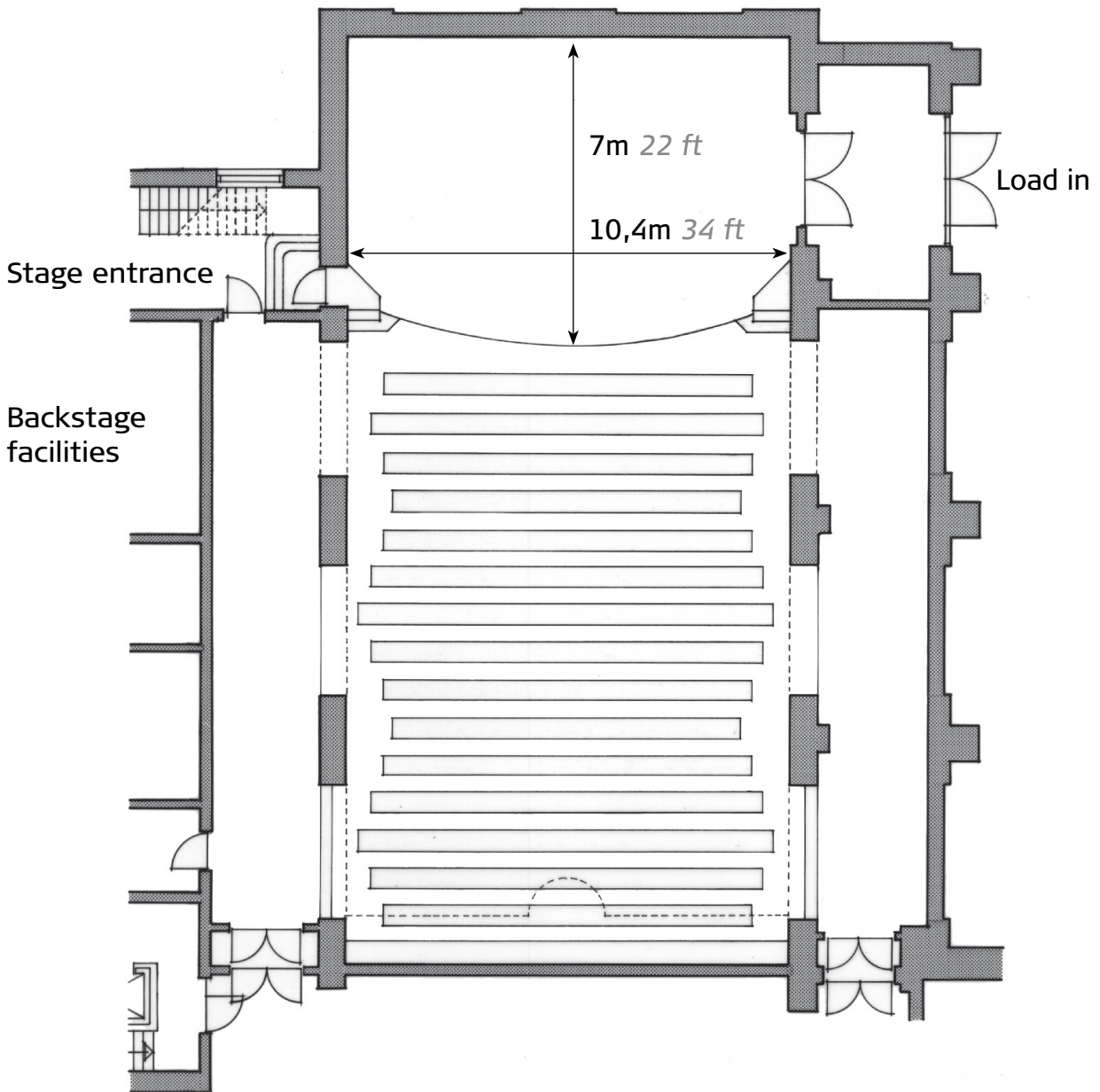


Stage measures

The Concert Hall - ground level

Stage level 0,8m 2.6 ft
 Stage measures 7,0m x 10,4m (d x w) 22 x 34 ft

Power 2 pcs. 63Amp
 4 pcs 16 Amp



Piano

Fazioli 307 grand concert piano.

Audio equipment

There is no permanent PA installed in The Concert Hall.
If needed, PA will be installed to meet requirements.

Light equipment

FOH

FOH is situated 14 Meters from downstage edge, or for normal classical concerts stage right behind a wall. House lights is also controlled from here.

Bars

There is 4 electrical bars over and in front of the stage: 1 upstage, 1 approx. centerstage, 1 downstage and 1 4metres from downstage edge

All bars are equipped with 16 tuschell sockets.

Lamps

Standard installation: US. 5 x 1 kw. ADB Fresnell.
 CS. 5 x 1 kw. ADB Fresnell
 DS. 4 x 1 kw. ADB Fresnell
 Front. 8 x 1 kw ADB Profiles

Dimmers 2 x 12 CH. Litec SP 12 Dimmers with patch

There is a DMX line running from dimmers to either stage right or FOH

Desk

For classical concerts and the like with only on/off lighting. The desk (stage right) is an LSC Atom.

Please note: It is not possible to rig any additional point over or in front of the stage

**We look forward
to your visit!**