

PRODUCTION SPECIFICATIONS

THE MANÈGE (RIDEHUSET)

PLEASE NOTE:

Clearance 4,70m from stage to truss (see pictures on page 2)

TABLE OF CONTENT

Contact information.....	2
No smoking	2
The Manège.....	2
Driving instructions	3
Load-in / Power	3
Stage measures.....	4
Backstage.....	5
Audio equipment.....	6
Light equipment.....	7

værket

Contact information

Værket

Sven Dalsgaards Plads 1
8900 Randers C
T: +45 89 13 51 00
F: +45 89 13 51 13
info@vaerket.dk

Technical manager

Arne Degn Nielsen
T: +45 40 16 45 00
adn@vaerket.dk

Managing director

Mikael Qvist Rørsted
T: +45 40 40 73 35
mr@vaerket.dk

No smoking

Smoking is not allowed inside Vaerket at any time.



The Menège (Ridehuset)

Built in 1887 The Manège housed The Danish King Christian X's finest cavalry.
Today The Manège is a part of Vaerket and houses large conferences and concerts.



1) The Manège
Capacity 1.400 standing.



2) Modified set-up with café
tables. Capacity 560
(all seated).

3) "Rock Club set-up"
Capacity 500 standing.

Driving instructions

From the north side of Randers:

Leave **highway E45** at exit number 40

Turn to the left at **Viborgvej** (16). Drive for 2,4 kilometres.

Continue at **Jernbanegade** for 0,6 kilometres

Turn to the left at **Vestervold** (which will become **Mariagervej**)

Turn to the right at **Fabersvej** and then right at **Ridehusvej** to reach Vaerket/back stage

From the south side of Randers:

Leave **highway E45** at exit number 42

Continue at **Hadstenvej** for 0,6 kilometres

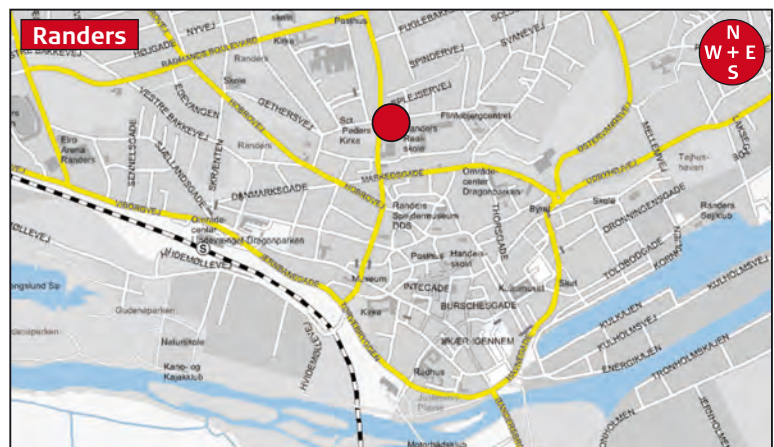
Continue at **Århusvej** for 3,2 kilometres

Continue at **Randers Bro** 0,3 kilometres

Turn to the left at **Tørvebryggen**. Drive for 0,7 kilometres.

Turn to the right at **Vestervold** (which will become **Mariagervej**)

Turn to the right at **Fabersvej** and then right at **Ridehusvej** to reach Vaerket/back stage



Load in / Power

Load in

Access to The Manège (Ridehuset) is via **Fabersvej/Ridehusvej** – as shown on the picture.

Aux power:

1 x 125 amp 5 phase CEE

2 x 63 amp 5 Phase CEE

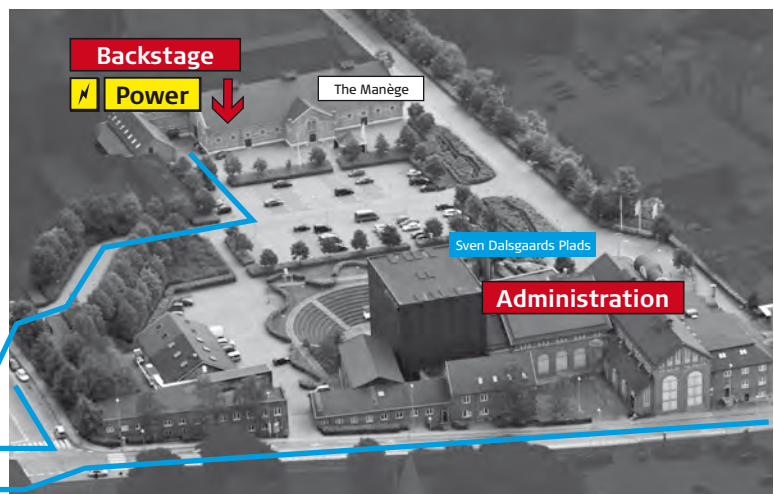
3 x 16 amp 5 phase CEE

3 x 16 amp 3 phase CEE

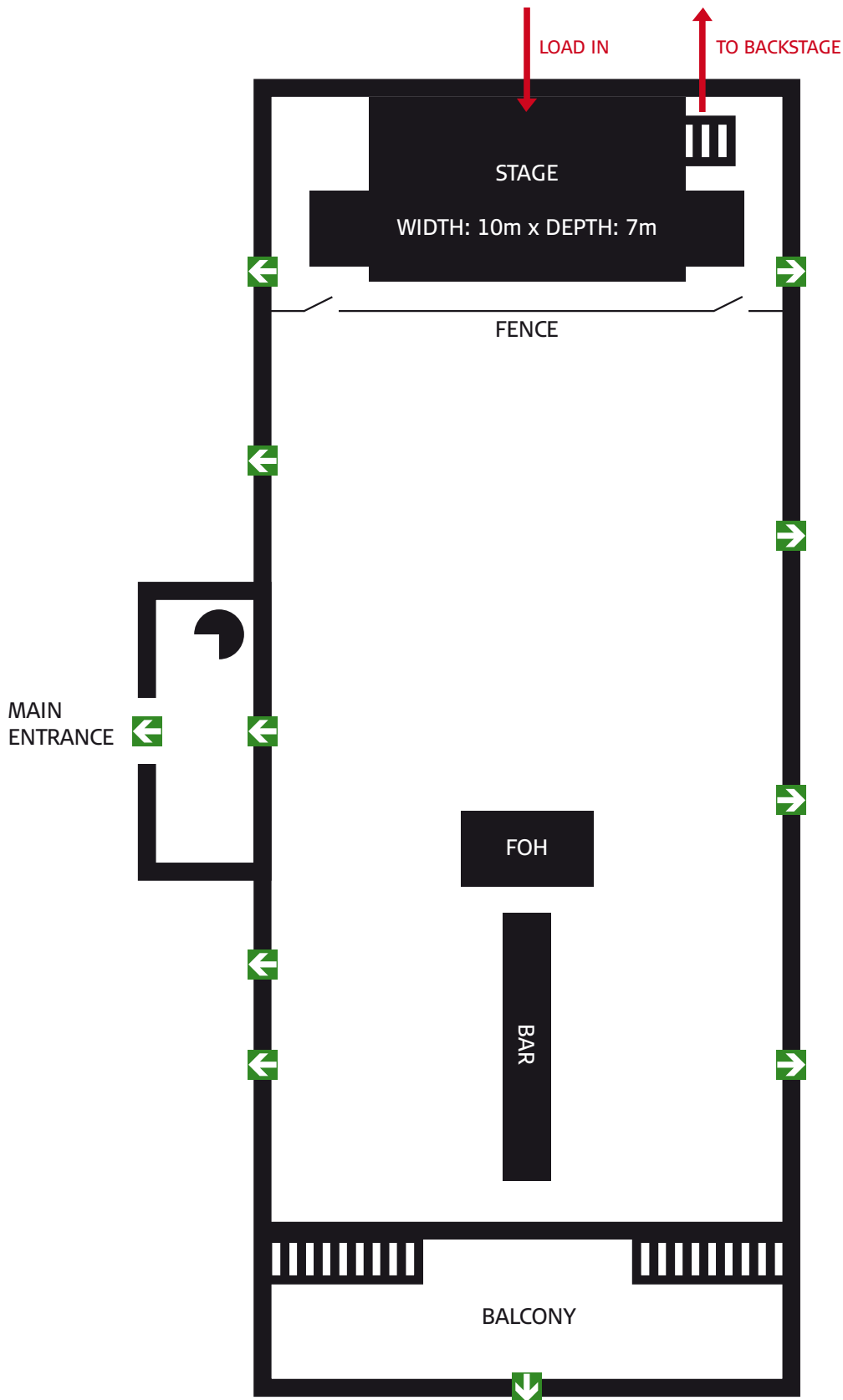
Ridehusvej

Fabersvej

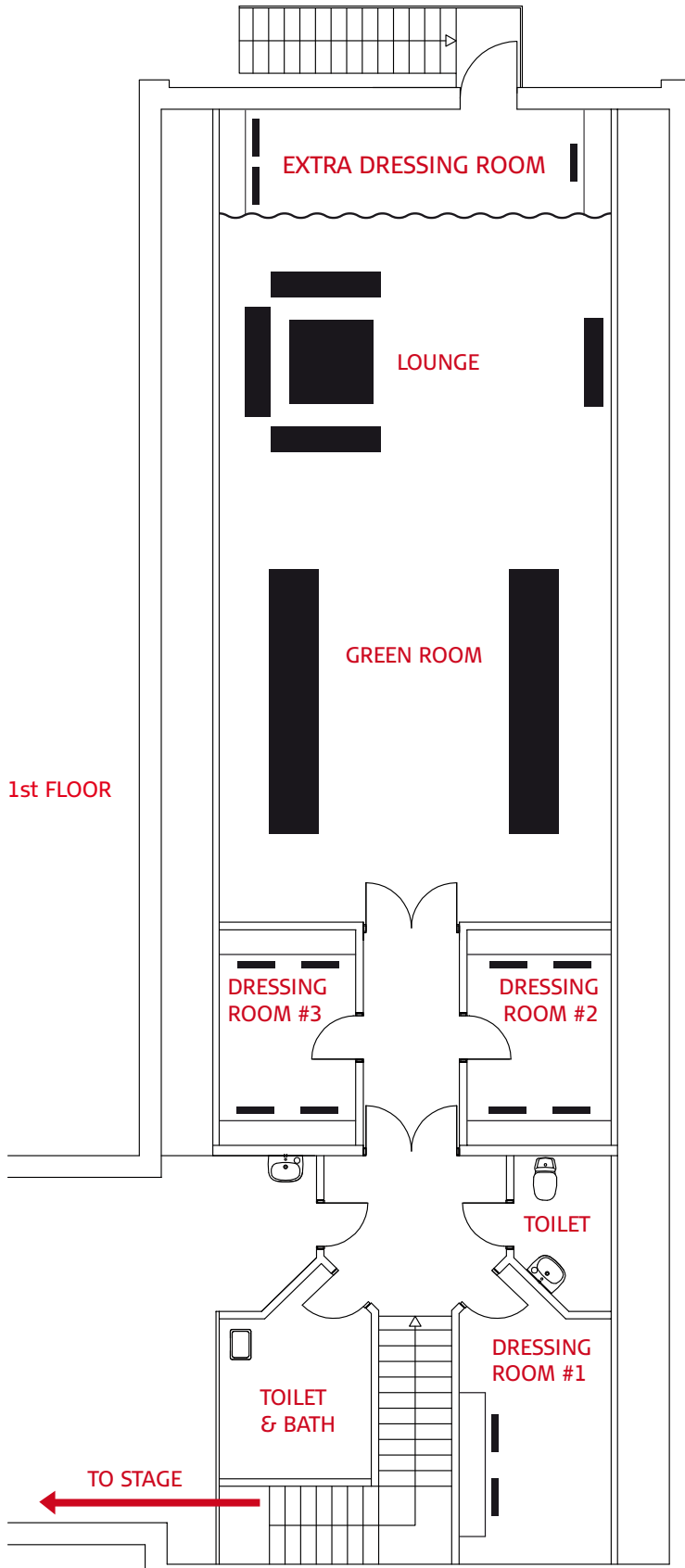
Mariagervej



Stage measures



Backstage



Dressing room #1

2 persons

Dressing rooms #2 & 3

4 persons in each

Extra dressing room

3 persons

Audio equipment

There is no permanent PA installed in The Manège.
If needed, PA will be installed to meet requirements.

Light equipment

Standard setup

The Manège (Ridehuset) is equipped with a Box truss. 10x6 Mtrs. on ground support.

All lights is hung on front, center and back truss. Please see drawing.

All lights at the Manège are set up to fit the specifications of the various acts.

Available at the Manège is :

Moving Lights:

- 12 x GLP Impression 120 RZ (LED Wash)
- 06 x GLP Spot one (LED Profile)
- 04 X Robe Colorspot 1200 AT (Mounted on a wheelbase for floorlighting only)

Conventional Lights:

- 24 x Thomas Par 64
- 08 x ADB 1200 W Profile.
- Dimmers 7 blocks of 12 Ch Dimmers with patching.

All Par lamps is equipped with Tuschell sockets.

All Multi core is with Harting sockets.

In most set ups, there will also be hung 4 to 8 ADB 1200 W profiles in front of the box truss.

Throughout the entire length of Ridehuset there is in total 22 Harting sockets which can be connected to our dimmers.

FOH: The Foh will consist of a fenced in an area 2/3 from stage, shared with sound.

Desk: Avolites Pearl 2008

Aux power: In back (north end) there is:

- 1x125 amp 5 phase CEE
- 2x63 amp 5 Phase CEE
- 3x16 amp 5 phase CEE
- 3x16 amp 3 phase CEE.

Stage left (east):

- As above.

All power will have to be distributed between Light, Sound and Backline.

In the above mentioned light set up we use 1 16 amp 5 phase cee for moving heads and 1 16 amp CEE 5 phase for the Blinders.

It is possible to rig extra truss throughout the length of The Manège

Please contact us beforehand should the need arise.