

# PRODUCTION SPECIFICATIONS

## THE MANÈGE (RIDEHUSET)

### PLEASE NOTE:

Clearance 4,70m from stage to truss (see pictures on page 2)

### TABLE OF CONTENT

---

Contact information.....	2
No smoking .....	2
The Manège.....	2
Driving instructions .....	3
Load-in / Power .....	3
Stage measures.....	4
Backstage.....	5
Audio equipment.....	6
Light equipment.....	7

# værket

## Contact information

### Værket

Sven Dalsgaards Plads 1  
8900 Randers C  
T: +45 89 13 51 00  
F: +45 89 13 51 13  
info@vaerket.dk

### Technical manager

Arne Degn Nielsen  
T: +45 40 16 45 00  
adn@vaerket.dk

### Managing director

Mikael Qvist Rørsted  
T: +45 40 40 73 35  
mr@vaerket.dk

## No smoking

Smoking is not allowed inside Vaerket at any time.



## The Menège (Ridehuset)

Built in 1887 The Manège housed The Danish King Christian X's finest cavalry.  
Today The Manège is a part of Vaerket and houses large conferences and concerts.



1) The Manège  
Capacity 1.400 standing.



2) Modified set-up with café  
tables. Capacity 560  
(all seated).

3) "Rock Club set-up"  
Capacity 500 standing.

## Driving instructions

### From the north side of Randers:

Leave **highway E45** at exit number 40

Turn to the left at **Viborgvej** (16). Drive for 2,4 kilometres.

Continue at **Jernbanegade** for 0,6 kilometres

Turn to the left at **Vestervold** (which will become **Mariagervej**)

Turn to the right at **Fabersvej** and then right at **Ridehusvej** to reach Vaerket/back stage

### From the south side of Randers:

Leave **highway E45** at exit number 42

Continue at **Hadstenvej** for 0,6 kilometres

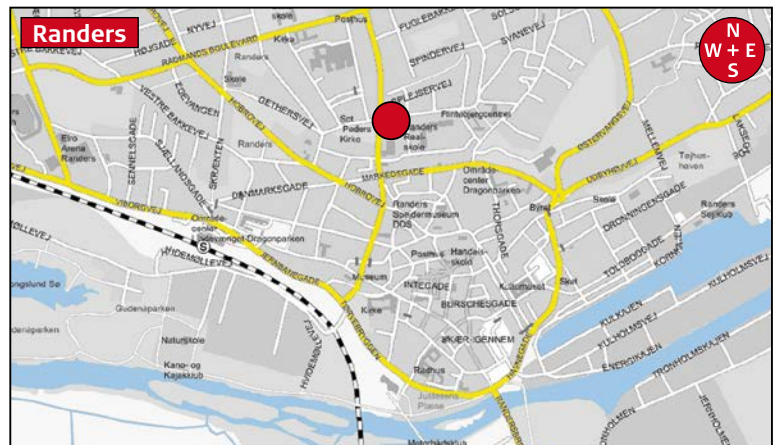
Continue at **Århusvej** for 3,2 kilometres

Continue at **Randers Bro** 0,3 kilometres

Turn to the left at **Tørvebyggen**. Drive for 0,7 kilometres.

Turn to the right at **Vestervold** (which will become **Mariagervej**)

Turn to the right at **Fabersvej** and then right at **Ridehusvej** to reach Vaerket/back stage



## Load in / Power

### Load in

Access to The Manège (Ridehuset) is via **Fabersvej/Ridehusvej** – as shown on the picture.

### Aux power:

1 x 125 amp 5 phase CEE

2 x 63 amp 5 Phase CEE

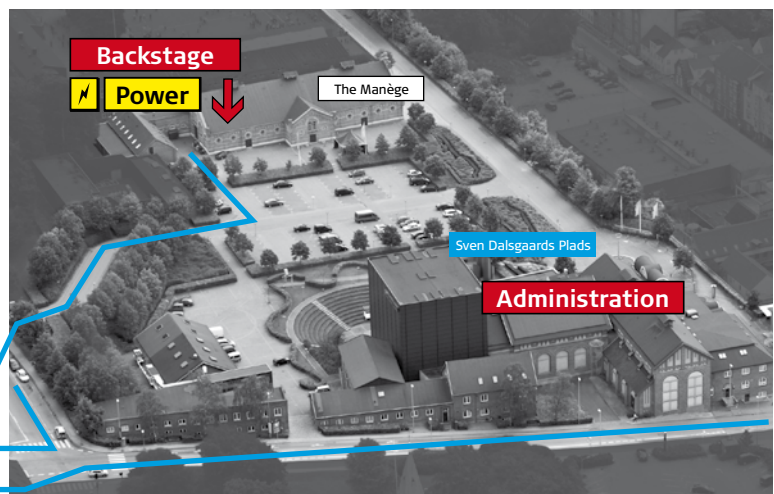
3 x 16 amp 5 phase CEE

3 x 16 amp 3 phase CEE

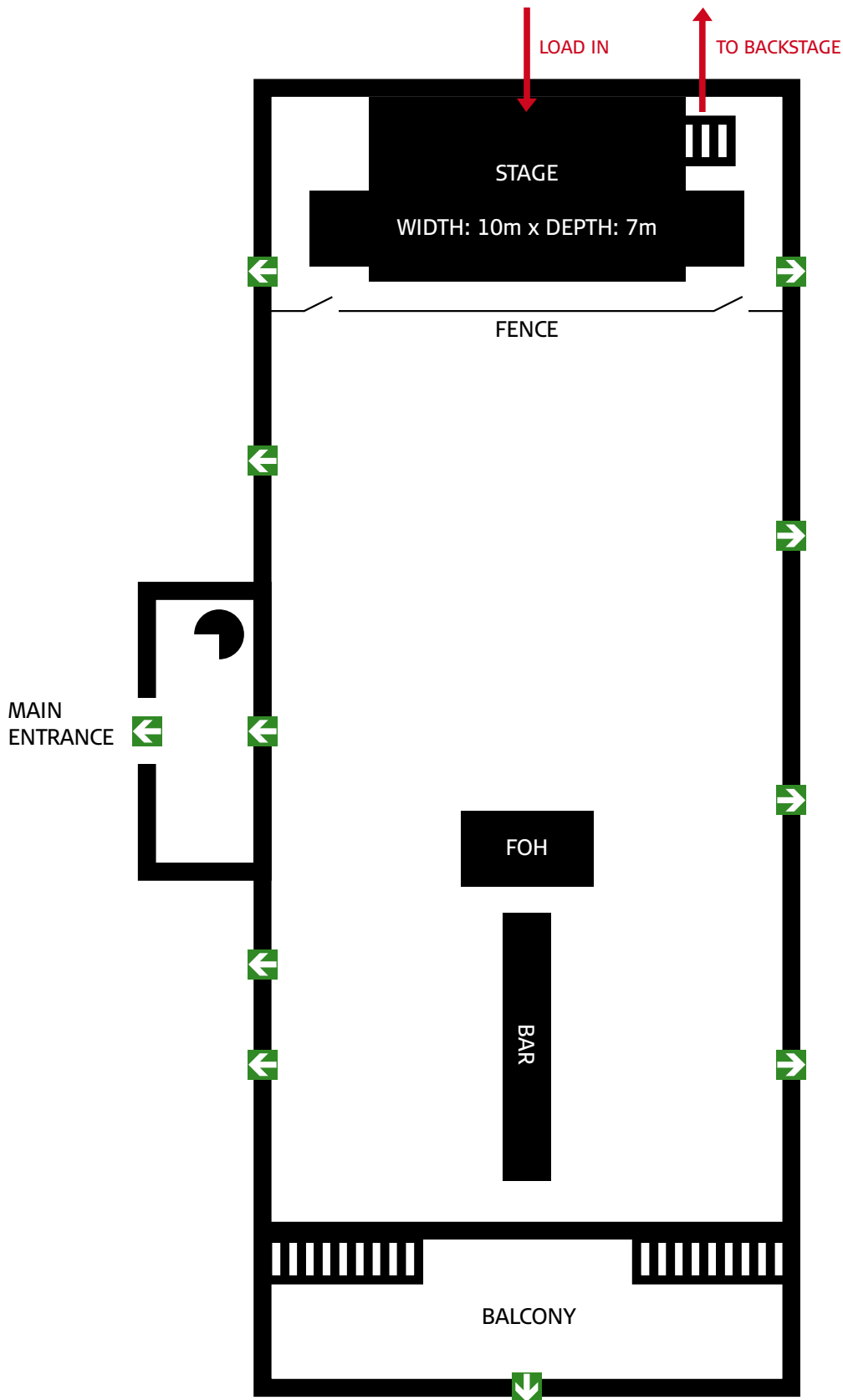
Ridehusvej

Fabersvej

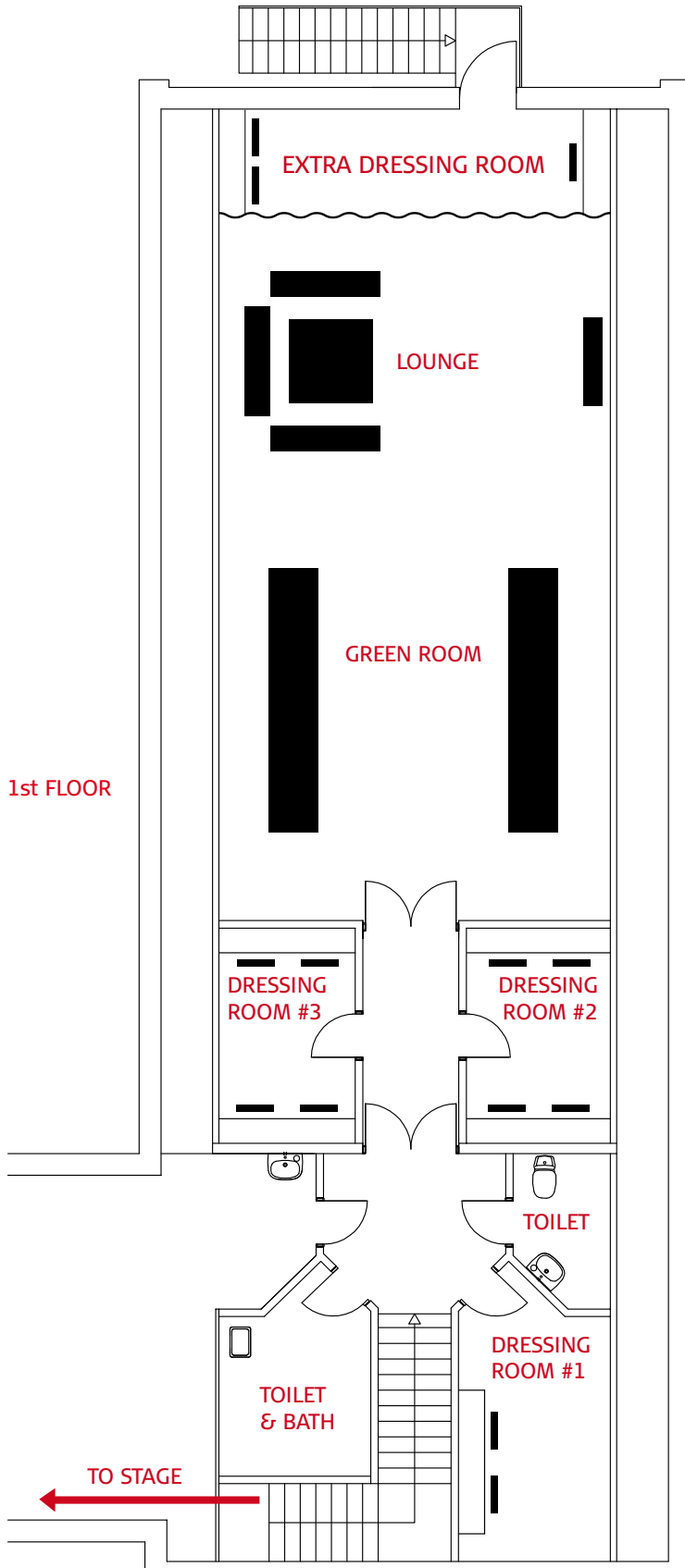
Mariagervej



## Stage measures



# Backstage



**Dressing room #1**

2 persons

**Dressing rooms #2 & 3**

4 persons in each

**Extra dressing room**

3 persons

## Audio equipment

FOH Console:	1 x Midas legend 3000 56ch	Microphones:	1 x Neumann KMS 105 bk 1 x AKG C414B XLII 5 x AKG CK 1 4 x AKG CK 8 2 x AKG 112 1 x DPA 4090 2 x DPA 4021 1 x Shure Beta 52 3 x Shure Beta 56 6 x Shure SM 58 1 x Shure Beta 58 3 x Shure Beta 58a 5 x Shure SM 57 2 x Shure Beta 87a & 2 x Shure ULXP 4 Wireless 2 x Sennheiser G2 Wireless Headset w. reciever 2 x Sennheiser G3 Wireless Headset w. reciever 6 x Sennheiser 421 4 x Sennheiser E904 6 x Sennheiser E912 3 x Crown Pcc 160 4 x SC 8401 Linedrivers 6 x LD LDI02 Linedrivers
FOH Eq:	1 x TC 1128 & 1 x 1128X		
FOH Fx:	1 x TC M5000 dual engine 1 x TC D-Two 1 x Yamaha spx 1000 1 x Yamaha spx 90		
FOH Dyn:	1 x Amek system 9098 Eq. 8 x TC Trippel C comp. 2 x Drawmer dual comp. 5 x Drawmer dual gate		
FOH Playback/Rec:	1 x Panasonic SV 3700 DAT Recorder 1 x Denon DN M2000R MD Recorder 1 x Denon DN C615 CD/MP3 Player		
Monitor Console:	1 x Midas Sienna 56 ch		
Monitor Eq:	1 x Klark Helix 9340 Master unit	Stands:	20 x K&M w. boom 7 x K&M w. round base & boom 4 x Windup & 4 x Stands for monitors
Monitor amps:	2 x Crown XTi 2000 w. DSP 2 x Crown XS 500		
Monitor Wedges:	8 x Turbo sound TXD 12 M	Mainfront	8 x HK ConTour Array CTA 208 8 x HK ConTour Array CTA 118 Active System Bass 2 x HK ConTour Series CT 108 & 1 x CTA 118



## Light equipment

---

### Standard setup

The Manège (Ridehuset) is equipped with a Box truss. 10x6 Mtrs. on ground support.

All lights is hung on front, center and back truss. Please see drawing.

All lights at the Manège are set up to fit the specifications of the various acts.

### Available at the Manège is :

#### Moving Lights:

- 12 x GLP Impression 120 RZ (LED Wash)
- 06 x GLP Spot one (LED Profile)
- 04 X Robe Colorspot 1200 AT (Mounted on a wheelbase for floorlighting only)

#### Conventional Lights:

- 24 x Thomas Par 64
- 08 x ADB 1200 W Profile.
- Dimmers 7 blocks of 12 Ch Dimmers with patching.

All Par lamps is equipped with Tuschell sockets.

All Multi core is with Harting sockets.

In most set ups, there will also be hung 4 to 8 ADB 1200 W profiles in front of the box truss.

Throughout the entire length of Ridehuset there is in total 22 Harting sockets which can be connected to our dimmers.

FOH: The Foh will consist of a fenced in an area 2/3 from stage, shared with sound.

Desk: Avolites Pearl 2008

#### Aux power: In back (north end) there is:

- 1x125 amp 5 phase CEE
- 2x63 amp 5 Phase CEE
- 3x16 amp 5 phase CEE
- 3x16 amp 3 phase CEE.

#### Stage left (east):

- As above.

All power will have to be distributed between Light, Sound and Backline.

In the above mentioned light set up we use 1 16 amp 5 phase cee for moving heads and 1 16 amp CEE 5 phase for the Blinders.

It is possible to rig extra truss throughout the length of The Manège

Please contact us beforehand should the need arise.